



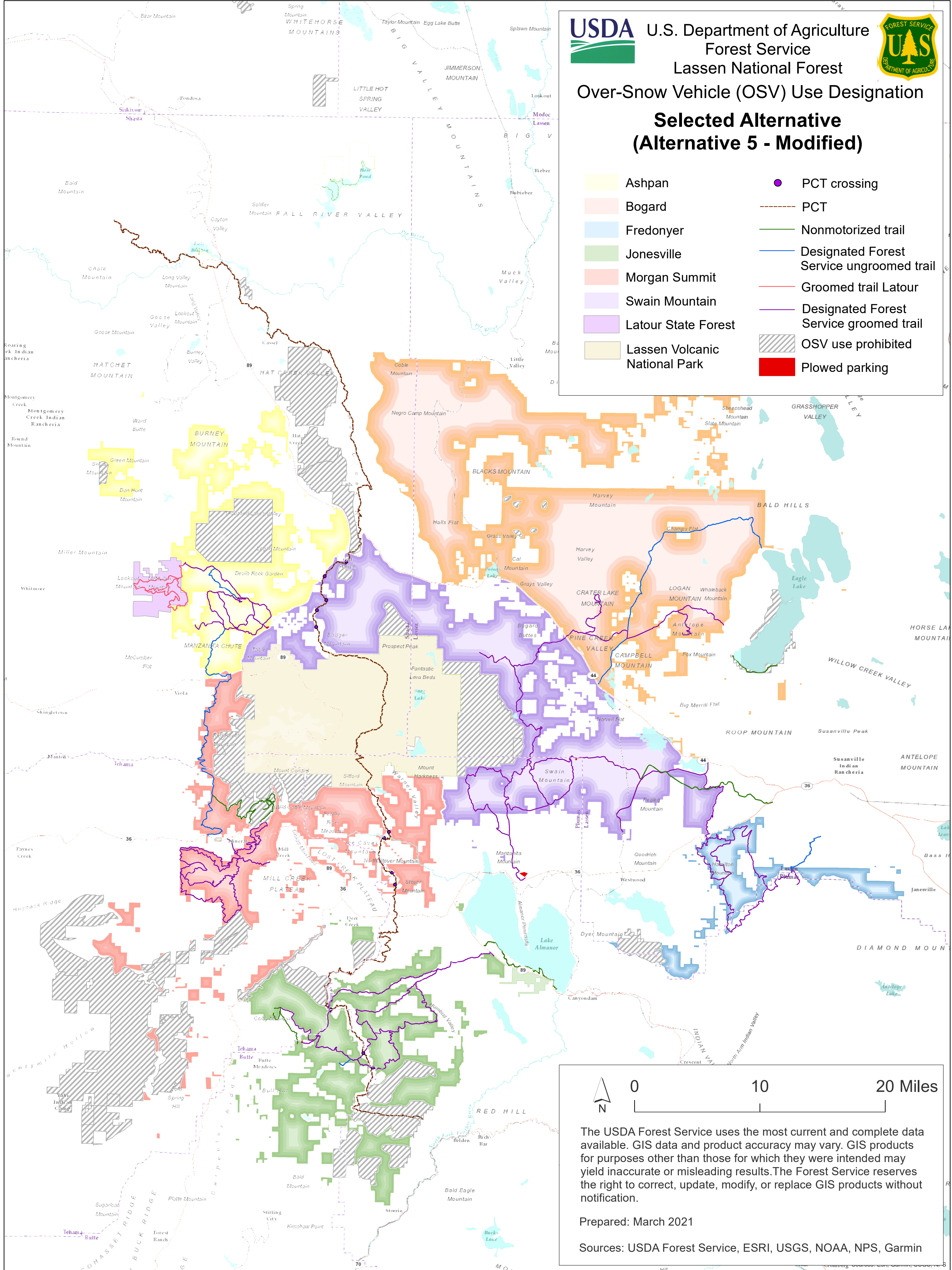
U.S. Department of Agriculture  
Forest Service  
Lassen National Forest



## Over-Snow Vehicle (OSV) Use Designation

### Selected Alternative (Alternative 5 - Modified)

- |                               |   |
|-------------------------------|---|
| Ashpan                        | PCT crossing                              |
| Bogard                        | PCT                                       |
| Fredonyer                     | Nonmotorized trail                        |
| Jonesville                    | Designated Forest Service ungroomed trail |
| Morgan Summit                 | Groomed trail Latour                      |
| Swain Mountain                | Designated Forest Service groomed trail   |
| Latour State Forest           | OSV use prohibited                        |
| Lassen Volcanic National Park | Plowed parking                            |



0

10

20 Miles

The USDA Forest Service uses the most current and complete data available. GIS data and product accuracy may vary. GIS products for purposes other than those for which they were intended may yield inaccurate or misleading results. The Forest Service reserves the right to correct, update, modify, or replace GIS products without notification.

Prepared: March 2021

Sources: USDA Forest Service, ESRI, USGS, NOAA, NPS, Garmin