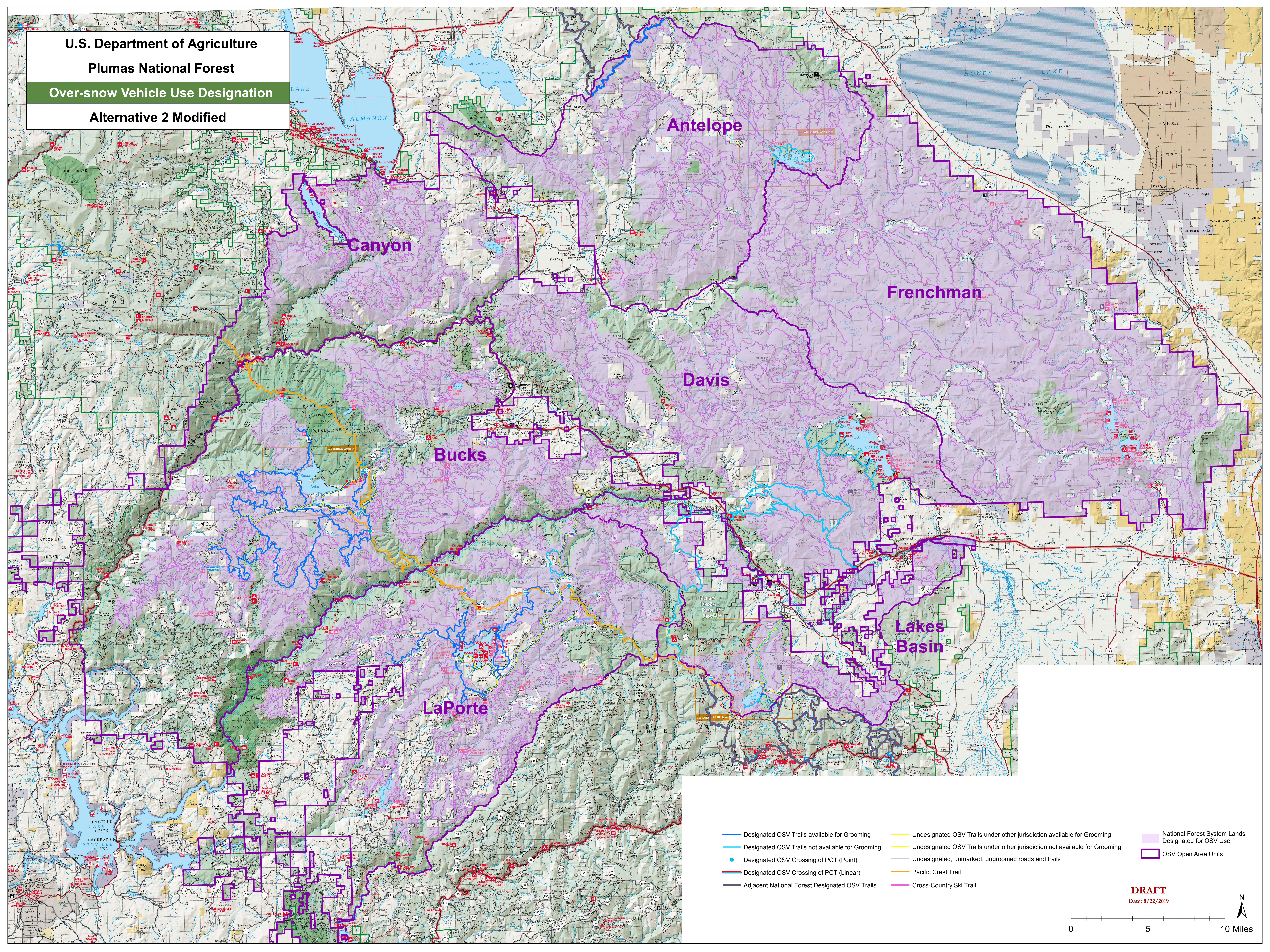


U.S. Department of Agriculture  
Plumas National Forest  
Over-snow Vehicle Use Designation  
Alternative 2 Modified



- Designated OSV Trails available for Grooming
- Designated OSV Trails not available for Grooming
- Designated OSV Crossing of PCT (Point)
- Designated OSV Crossing of PCT (Linear)
- Adjacent National Forest Designated OSV Trails
- Undesignated OSV Trails under other jurisdiction available for Grooming
- Undesignated OSV Trails under other jurisdiction not available for Grooming
- Undesignated, unmarked, ungroomed roads and trails
- Pacific Crest Trail
- Cross-Country Ski Trail
- National Forest System Lands Designated for OSV Use
- OSV Open Area Units

DRAFT  
Date: 8/22/2019

