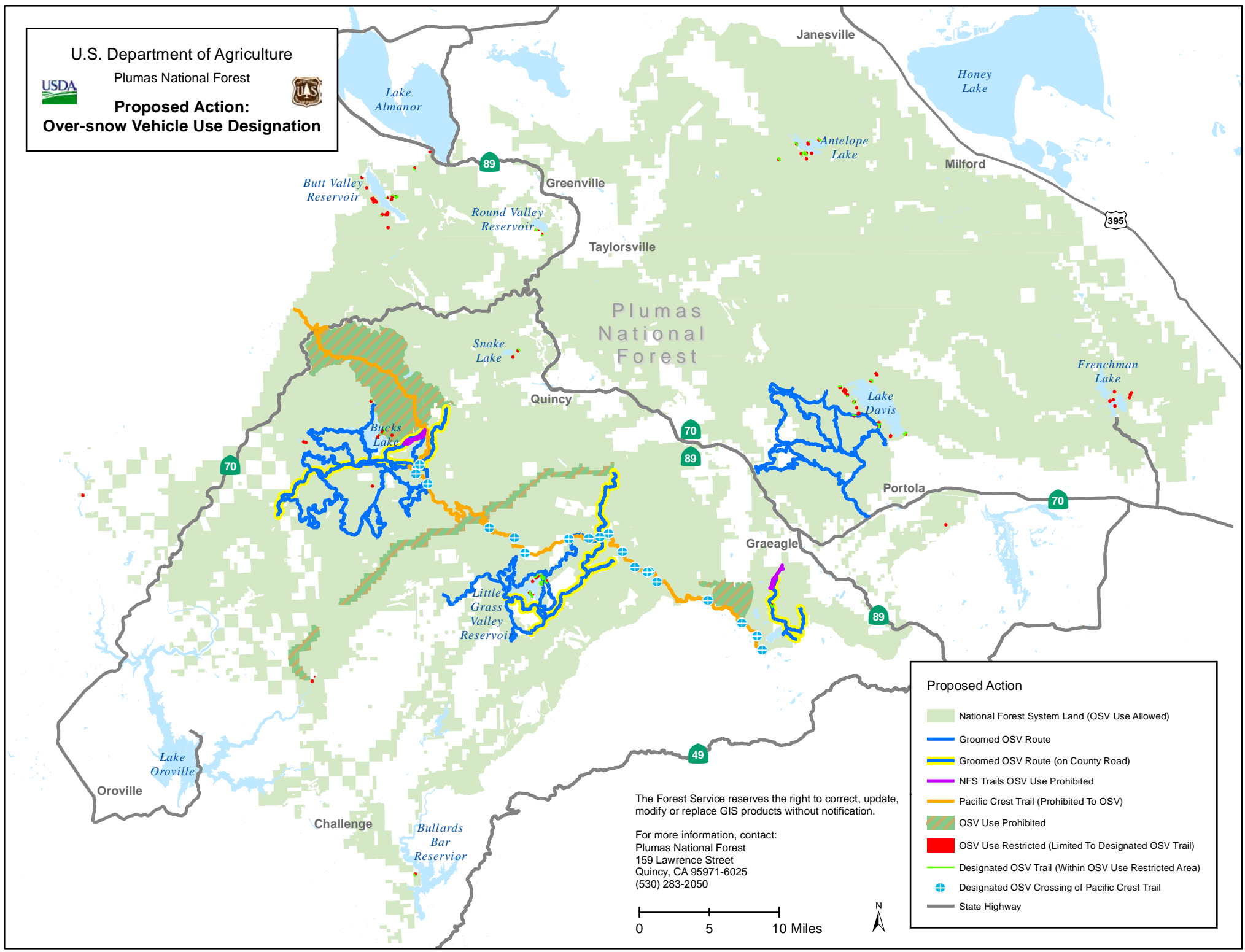
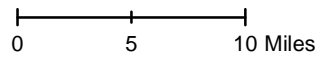


U.S. Department of Agriculture  
 USDA Plumas National Forest  
**Proposed Action:  
 Over-snow Vehicle Use Designation**



The Forest Service reserves the right to correct, update, modify or replace GIS products without notification.

For more information, contact:  
 Plumas National Forest  
 159 Lawrence Street  
 Quincy, CA 95971-6025  
 (530) 283-2050



**Proposed Action**

- National Forest System Land (OSV Use Allowed)
- Groomed OSV Route
- Groomed OSV Route (on County Road)
- NFS Trails OSV Use Prohibited
- Pacific Crest Trail (Prohibited To OSV)
- OSV Use Prohibited
- OSV Use Restricted (Limited To Designated OSV Trail)
- Designated OSV Trail (Within OSV Use Restricted Area)
- Designated OSV Crossing of Pacific Crest Trail
- State Highway