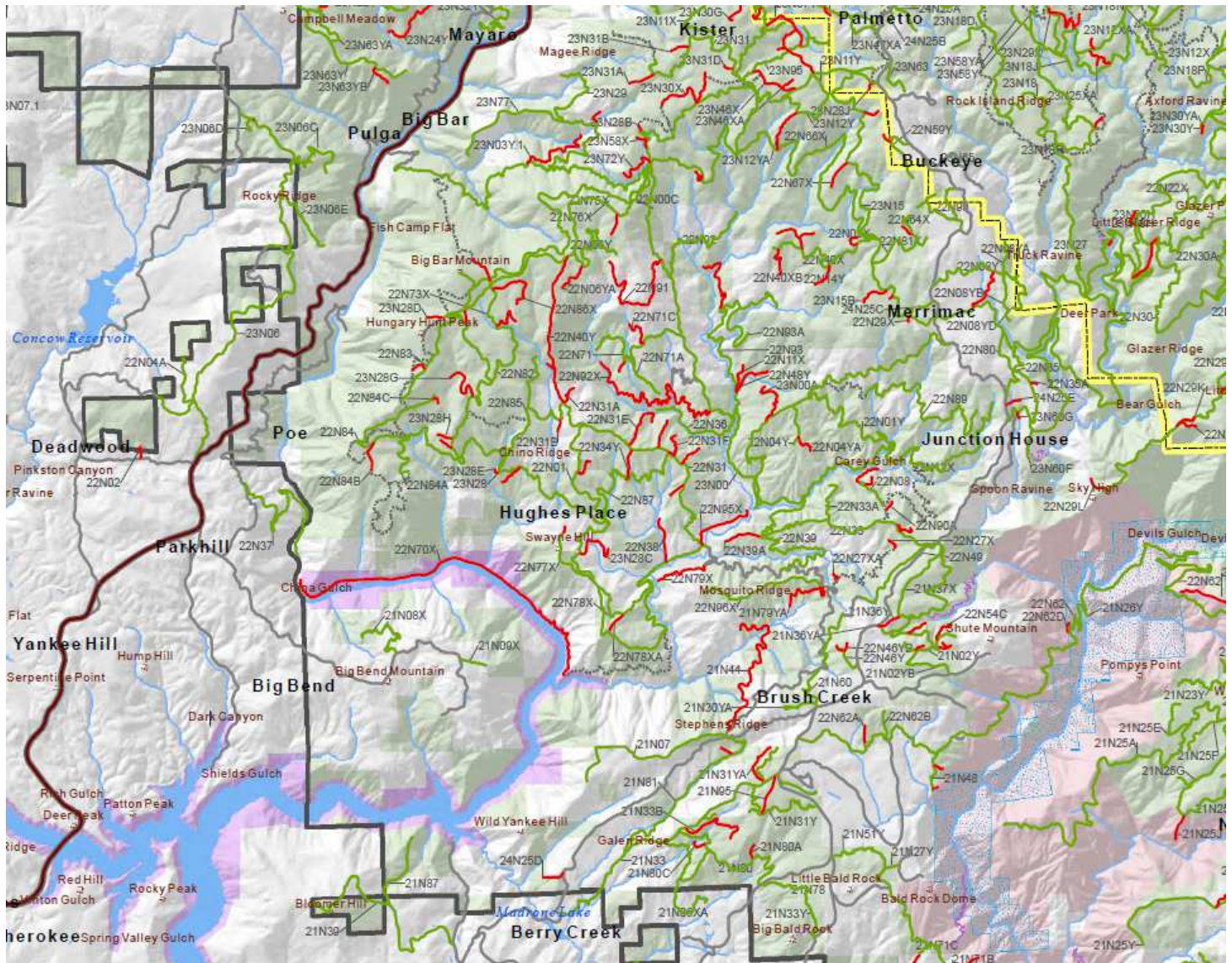


4WD and OHV users of roads in the Plumas National Forest in the French Creek area are invited to share their ideas about which roads in that area should be the focus of the OHV grant recently secured by Butte County. The work will be done next spring and summer, and volunteers will also be needed for matching volunteer hours. If you are interested in participating in this process, a special meeting is scheduled for public comment on November 18th at 6:00 pm at the Butte County Development Services Conference Room, 7 County Center Drive in Oroville.

The County hopes that this will be the first of many annual OHV grants to provide for maintaining OHV and 4WD routes in Plumas and Lassen National Forests. Public input is valued and necessary!

Area of focus – French Creek



The Butte County Forest Advisory Committee facilitates outreach and public involvement to assist the County in its quest to meet the guiding principles of the Butte General Plan 2030 as it pertains to use of public lands. Additional information about this topic, the committee, and areas of focus can be found at <http://www.buttecounty.net/dds/Meetings/PublicAccessLands/FAC.aspx>



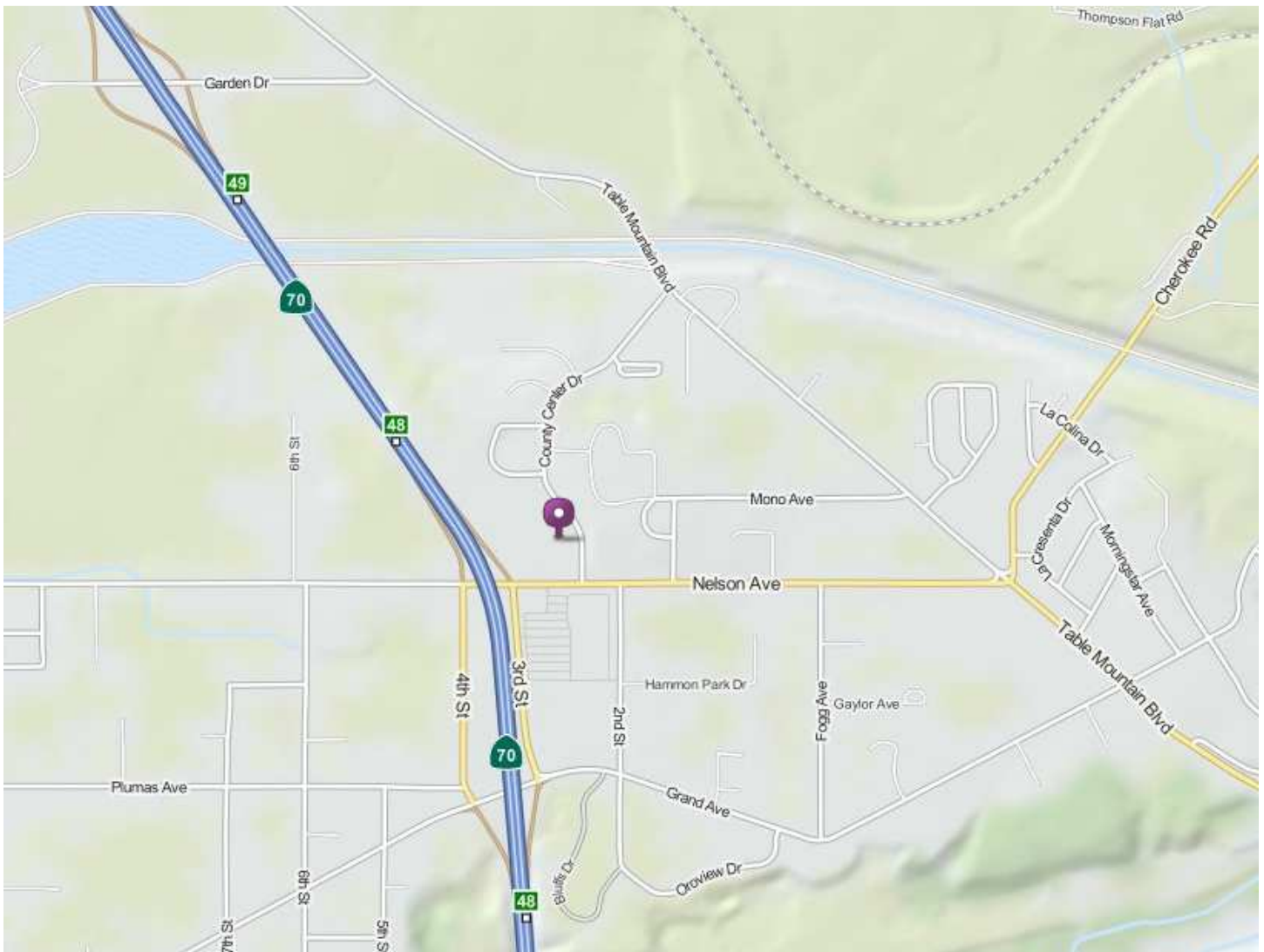
Meeting Location:

Butte County Development Services Building Conference Room
7 County Center Drive
Oroville

Directions via Highway 70:

Take the Nelson/Grand Ave. exit. Turn onto Nelson Avenue going east. Turn left on County Center Drive going in a northern direction. Take the first left access drive, which brings you right in front of the Development Services Building (white building with blue roof).

Map:



The Butte County Forest Advisory Committee facilitates outreach and public involvement to assist the County in its quest to meet the guiding principles of the Butte General Plan 2030 as it pertains to use of public lands. Additional information about this topic, the committee, and areas of focus can be found at <http://www.buttecounty.net/dds/Meetings/PublicAccessLands/FAC.aspx>